



Exporting PDF Files from QuarkXpress 7 & 8

Customer Guide

Alcom

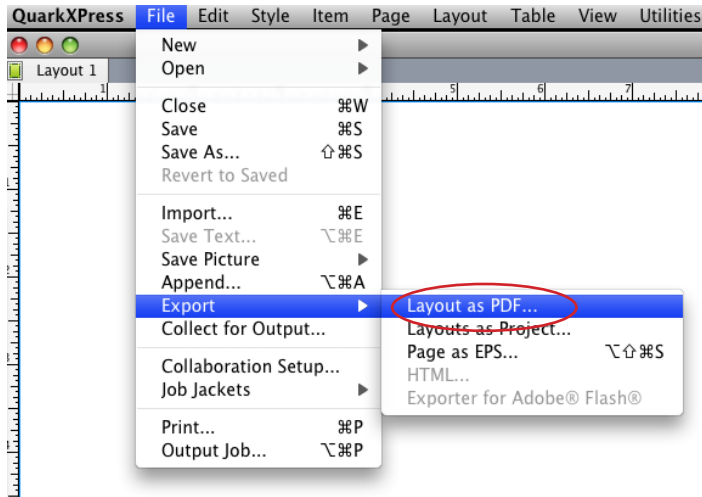
an Integrated Marketing Communications Company

140 Christopher Lane | Harleysville, PA 19438 | 215.513.1600 | www.alcomprinting.com



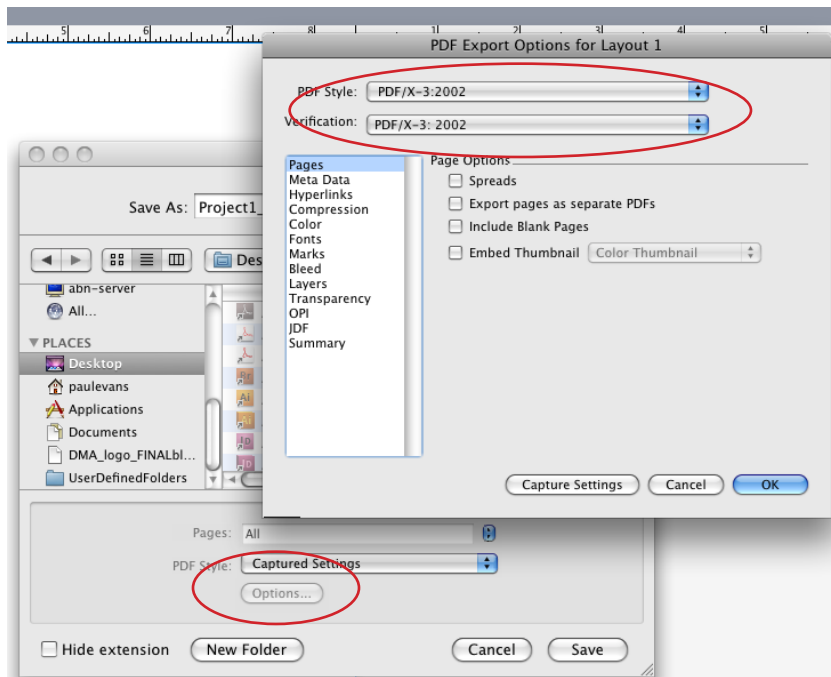
The next series of screen captures will show what settings should be chosen, when exporting PDF files from QuarkXpress 7 & 8.

If you have any questions prior to submitting PDF files to Alcom please call your solution provider or customer service representative.



EXPORTING PDF FILES

Under file select Export Layout as PDF



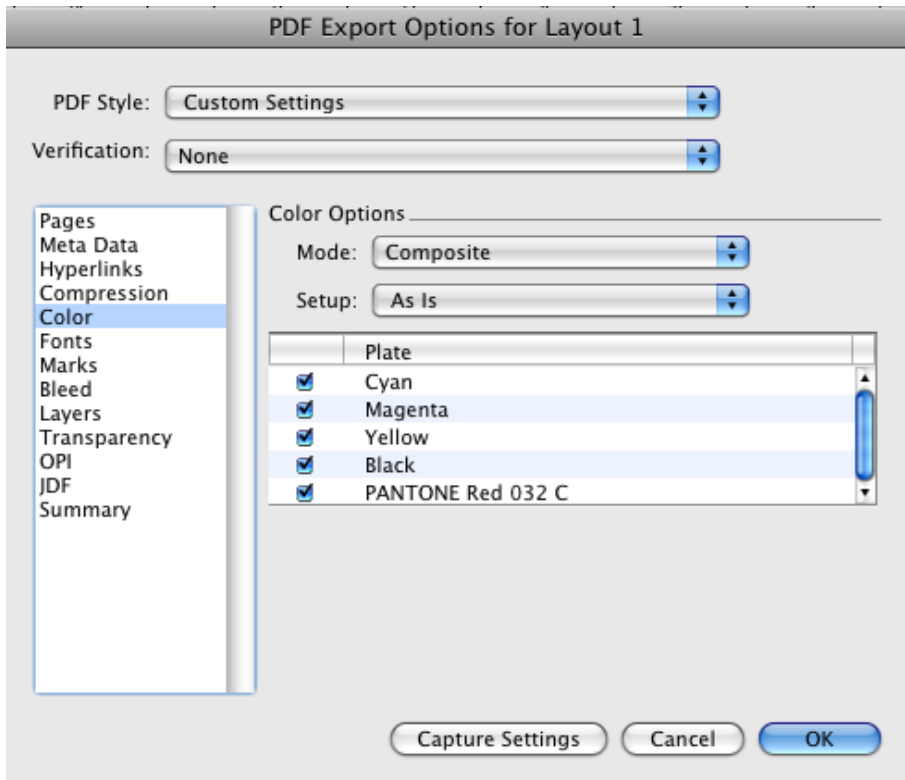
PDF OPTIONS

Click on the options button.

Select PDF/X3-2002 for the PDF Style.

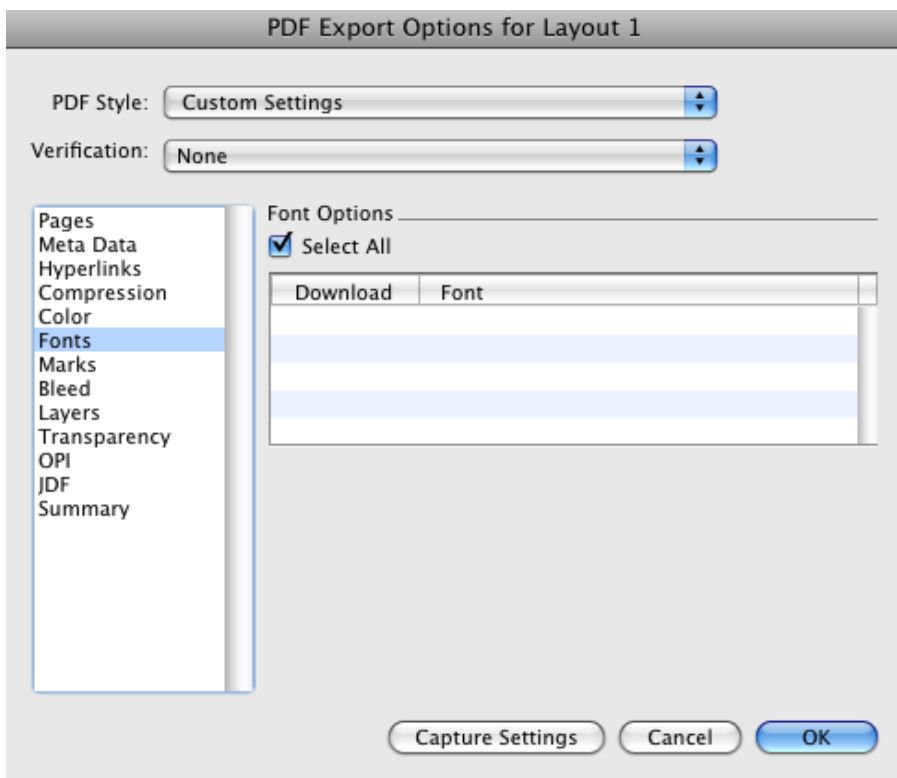
The Pages, Meta Data, Hyerlinks and Compression Tabs can all be left at the default settings.

COLOR AND FONT TABS



COLOR

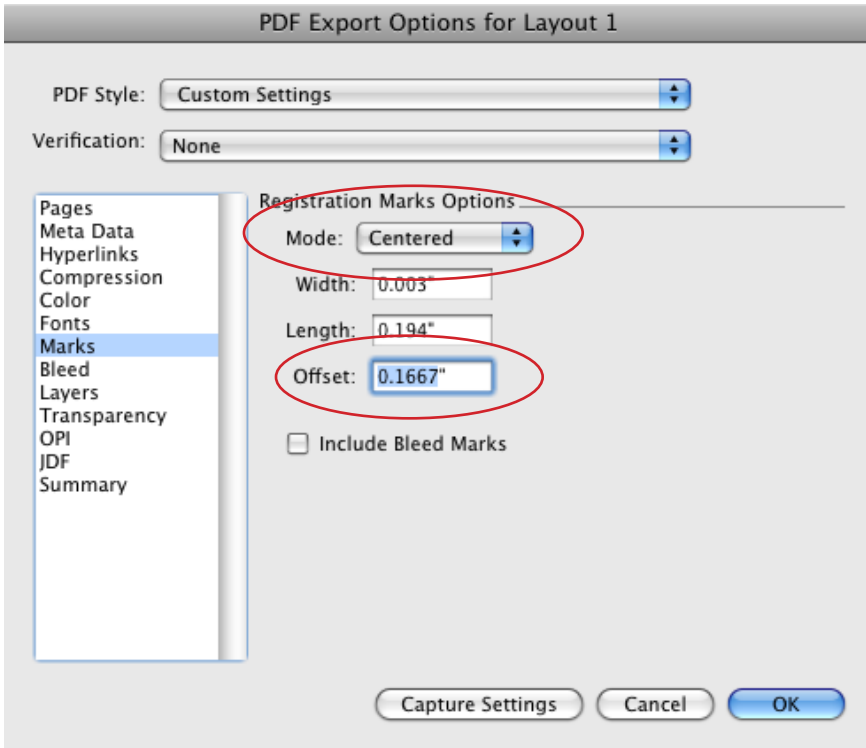
The Color mode should be Composite and the setup As is.



FONTS

Make sure Select All is checked.

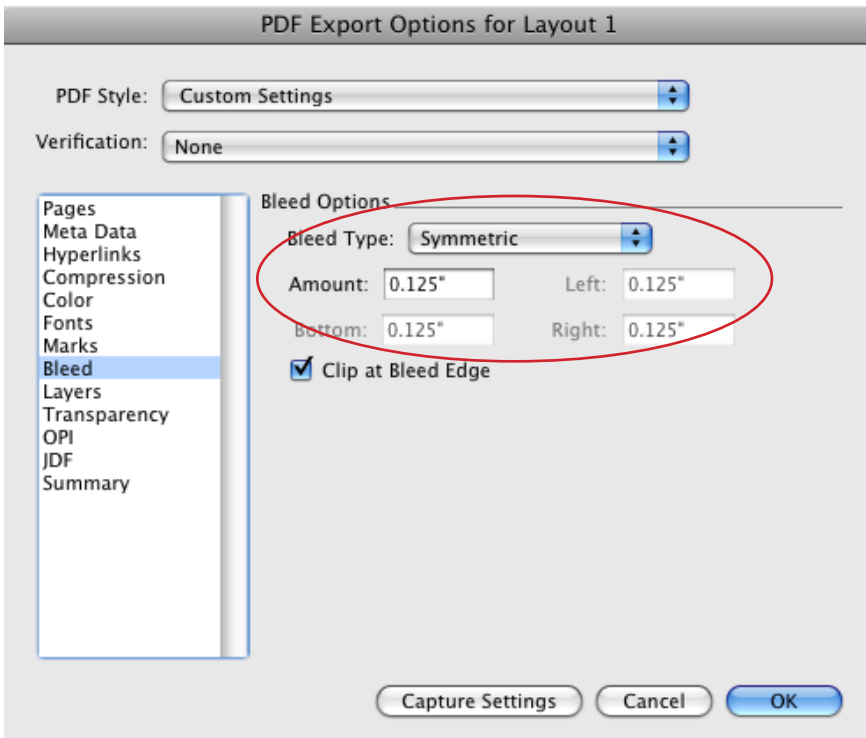
MARKS AND OUTPUT TABS



MARKS

Mode select Centered

Change the offset to .1667 in.



BLEED

Bleed Type is Symetric

Amount is .125 in.

The Advanced, Security and Layers, tranparency, OPI, JDF and summary tabs can be left at the default settings.